

HUNTERS[®]

HERE TO GET *you* THERE



Coachman's Terrace

80-86 Clapham Road, SW9 0JR

£1,850 Per Calendar Month



Purpose built one bedroom apartment in The Oval

This well proportioned apartment forms part of a Victorian Mansion block and benefits from a good sized double bedroom with ample storage, a separate reception and and modern fitted kitchen with a range of integrated appliances.

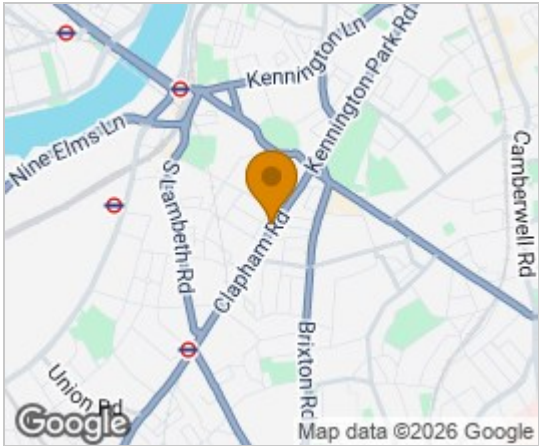
The contemporary bathroom comes with both bath and shower fitting.

A short walk to Oval underground station providing easy access to both the West End & City. There are a vast range of bars, restaurants and local amenities nearby.

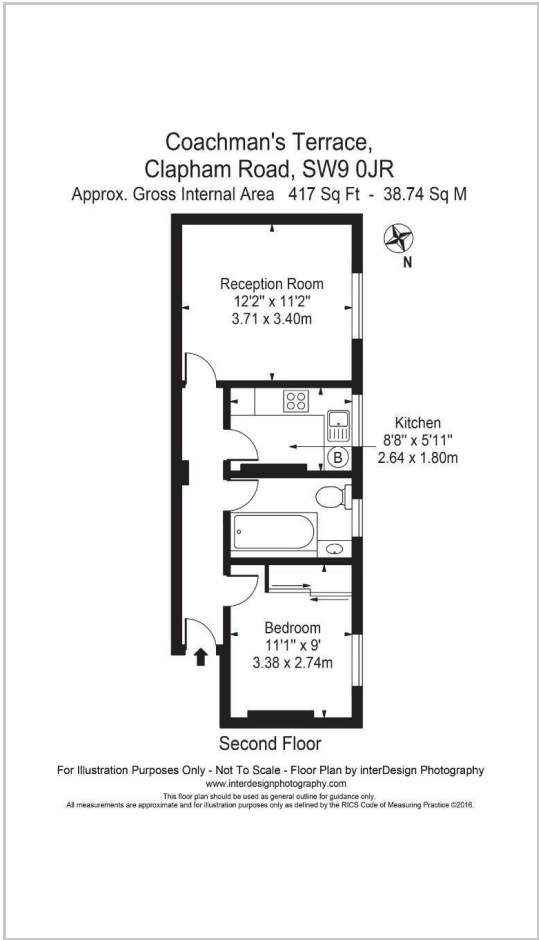
The famous Oval cricket stadium is a short walk away.



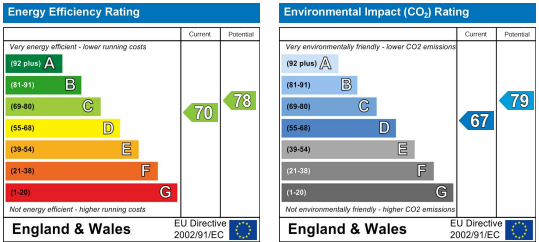
Area Map



Floor Plans



Energy Efficiency Graph



These particulars are intended to give a fair and reliable description of the property but no responsibility for any inaccuracy or error can be accepted and do not constitute an offer or contract. We have not tested any services or appliances (including central heating if fitted) referred to in these particulars and the purchasers are advised to satisfy themselves as to the working order and condition. If a property is unoccupied at any time there may be reconnection charges for any switched off/disconnected or drained services or appliances - All measurements are approximate.

THINKING OF SELLING? If you are thinking of selling your home or just curious to discover the value of your property, Hunters would be pleased to provide free, no obligation sales and marketing advice. Even if your home is outside the area covered by our local offices we can arrange a Market Appraisal through our national network of Hunters estate agents.